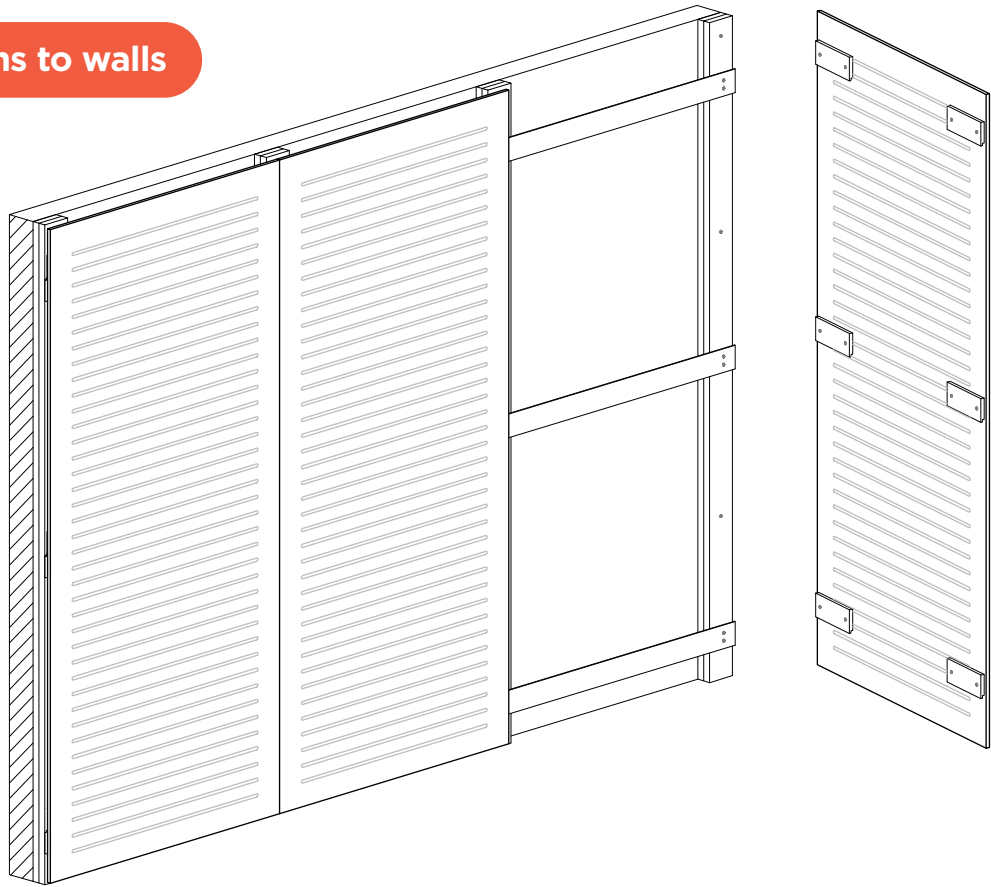


installation info

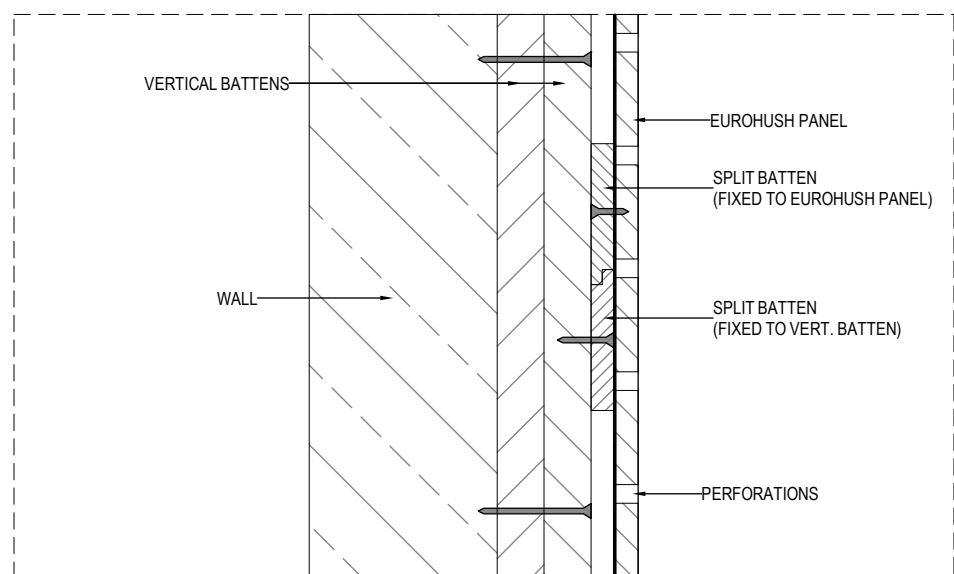
EUROHUSH TO WALLS

euroHUSH battens to walls

Panels are secured to the wall using 12mm MDF split battens, which are screw fixed to selected vertical wall battens.



Side section showing batten interlocking



COMPLETE YOUR DESIGN WITH **EUROPANEL**
HELPLINE 02 8284 6410 WWW.EUROPANEL.COM.AU


europanel
acoustic solutions

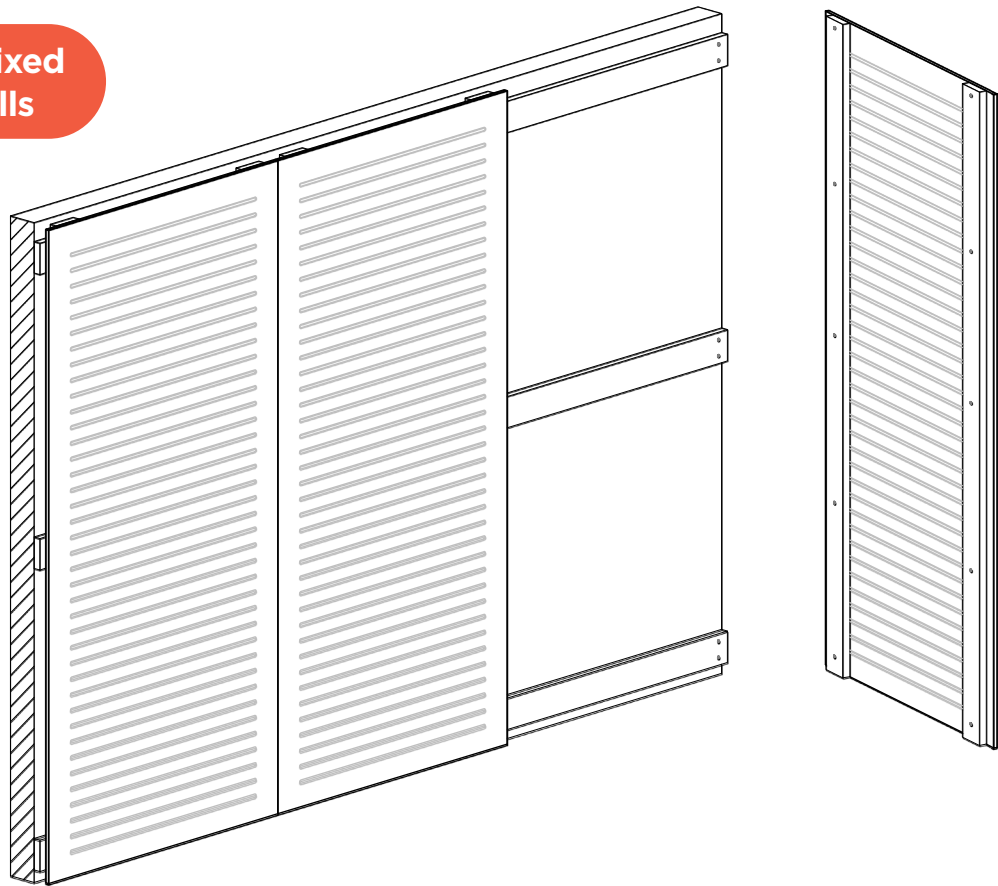
installation info

EUROHUSH TO WALLS

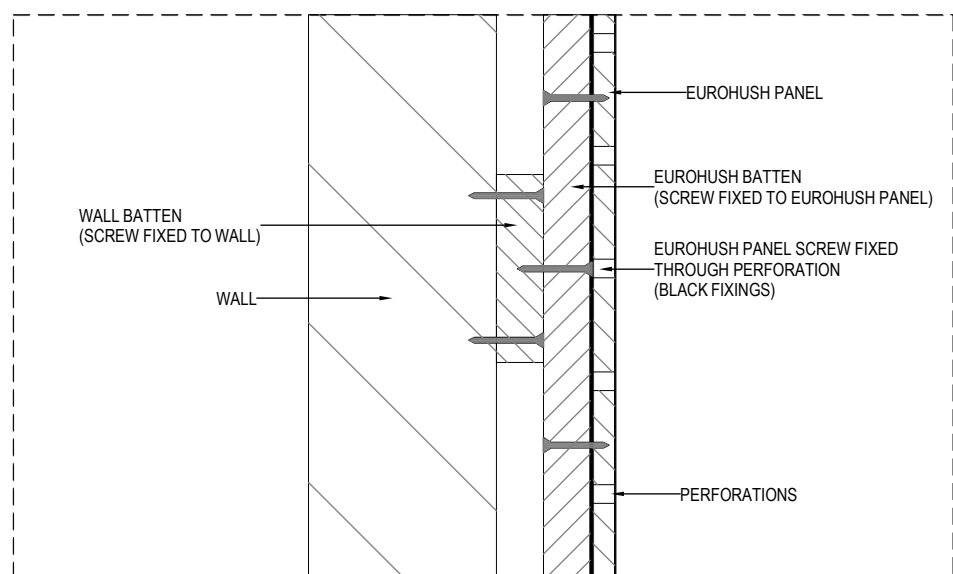
euroHUSH face fixed to battens on walls

Panels are secured to the wall by screw fixing through the euroHUSH batten into the wall batten.

euroHUSH batten is positioned over a perforation and the screw head is hidden within the perforation.



Side section showing batten interlocking



COMPLETE YOUR DESIGN WITH **EUROPANEL**
HELPLINE 02 8284 6410 WWW.EUROPANEL.COM.AU


europanel
acoustic solutions