

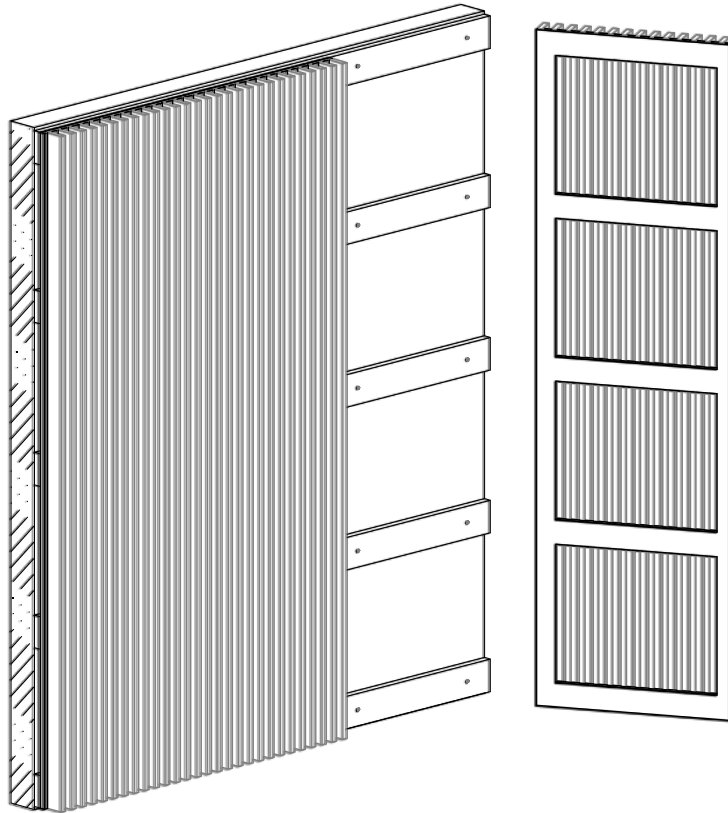
installation info

EUROBLADE TO WALLS VERTICAL BATTEN DIRECTION

Direct fixing

(Suggested method)

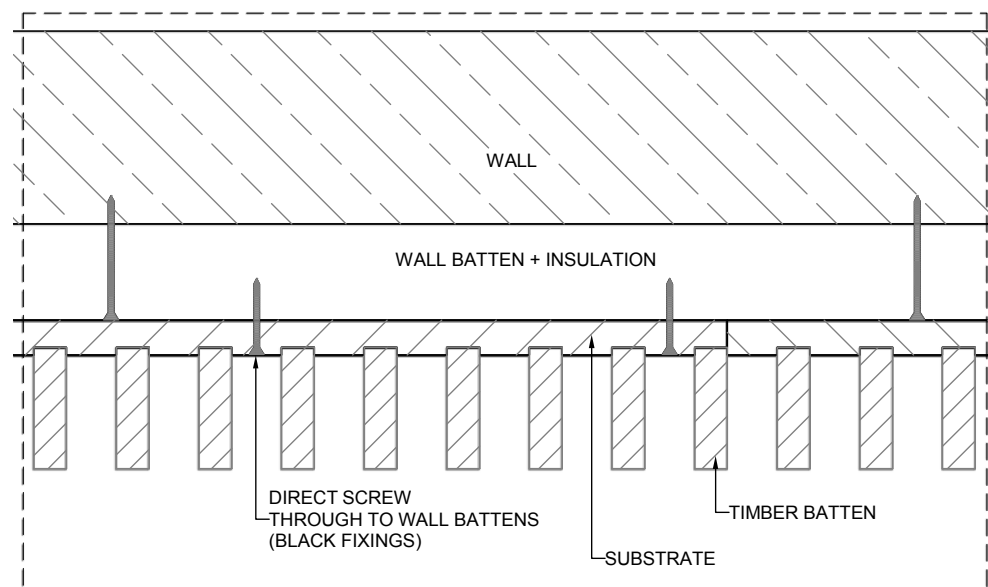
Panels with horizontal matt black substrates are direct fixed to installed horizontal wall battens.



Plan section showing batten direct fixing

(Suggested method)

Black screws are used so that the black coloured screw head is hidden in the spacing between the battens.



COMPLETE YOUR DESIGN WITH **EUROPANEL**
HELPLINE 02 8284 6410 WWW.EUROPANEL.COM.AU

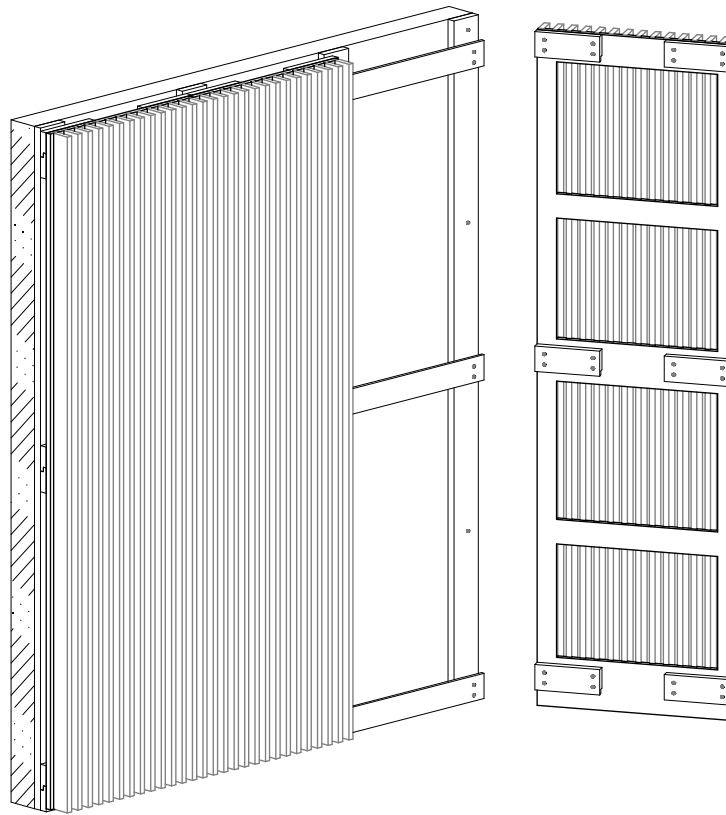

europanel
acoustic solutions

installation info

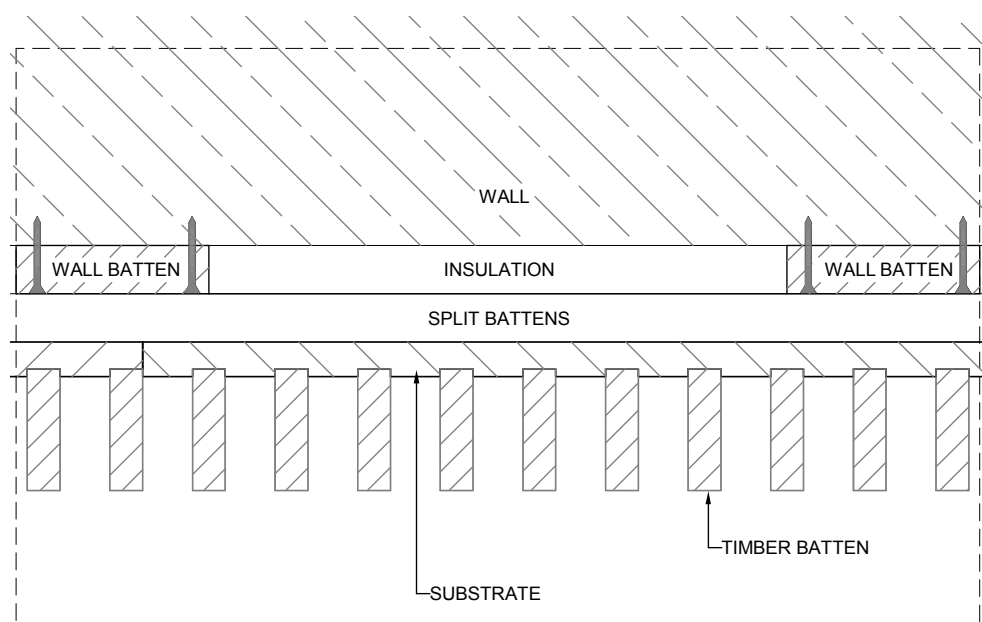
EUROBLADE TO WALLS VERTICAL BATTEN DIRECTION

Split batten fixing

Panels with horizontal substrates are installed using split battens fixed to the back of the panel, interlocking with split battens fixed to vertical wall battens.



Plan section showing split batten fixing



COMPLETE YOUR DESIGN WITH **EUROPANEL**
HELPLINE 02 8284 6410 WWW.EUROPANEL.COM.AU


europanel
acoustic solutions