

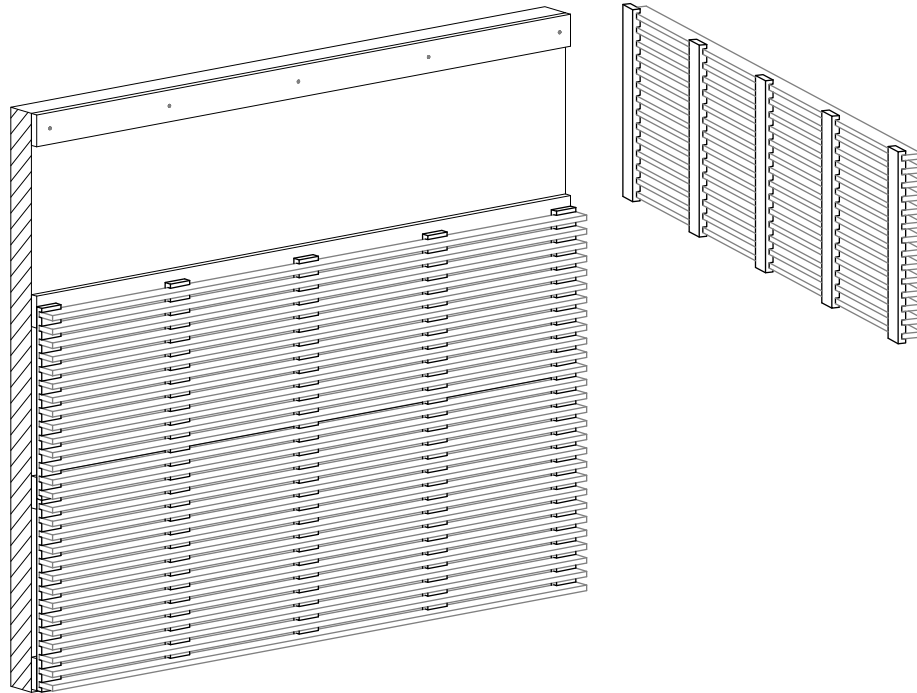
installation info

EUROBLADE TO WALLS HORIZONTAL BATTEN DIRECTION

Direct fixing

(Suggested method)

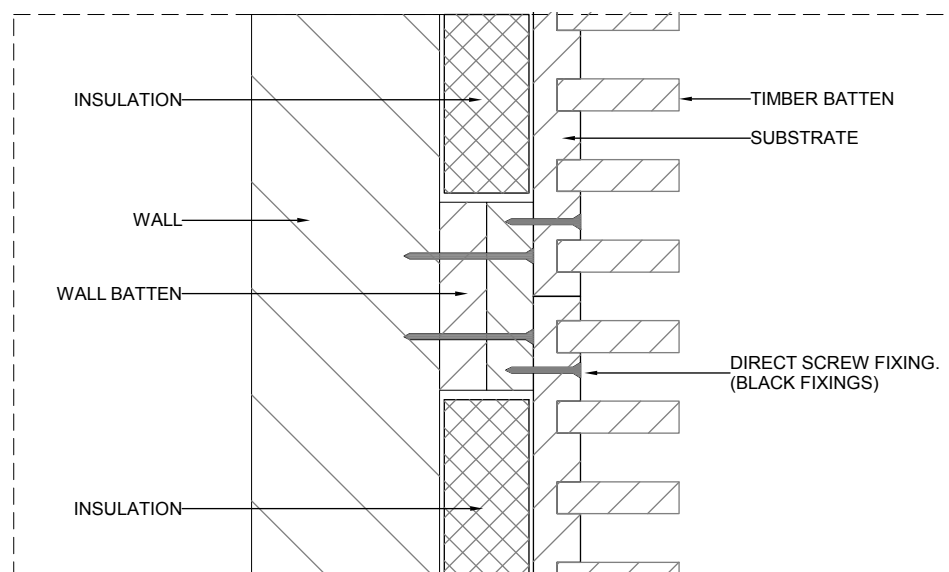
Panels with vertical matt-black substrates are direct-fixed to installed horizontal wall battens.



Plan section showing batten direct fixing

(Suggested method)

Black screws are used so that the black coloured screw head is hidden in the spacing between the battens.



COMPLETE YOUR DESIGN WITH **EUROPANEL**
HELPLINE 02 8284 6410 WWW.EUROPANEL.COM.AU

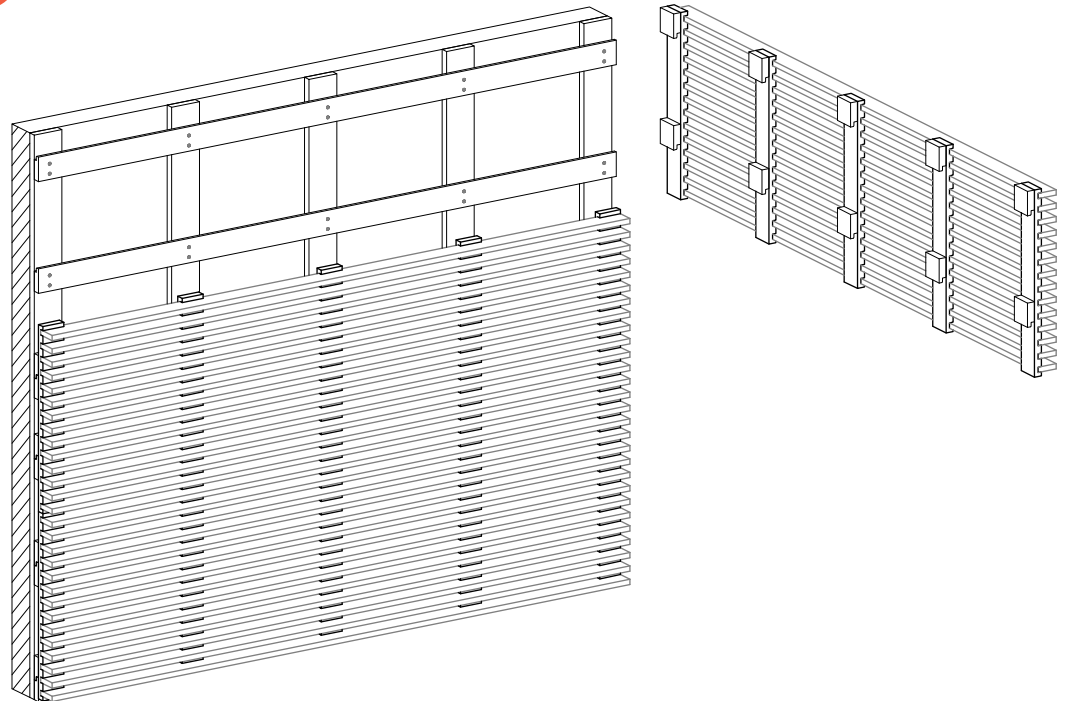
**europanel**
acoustic solutions

installation info

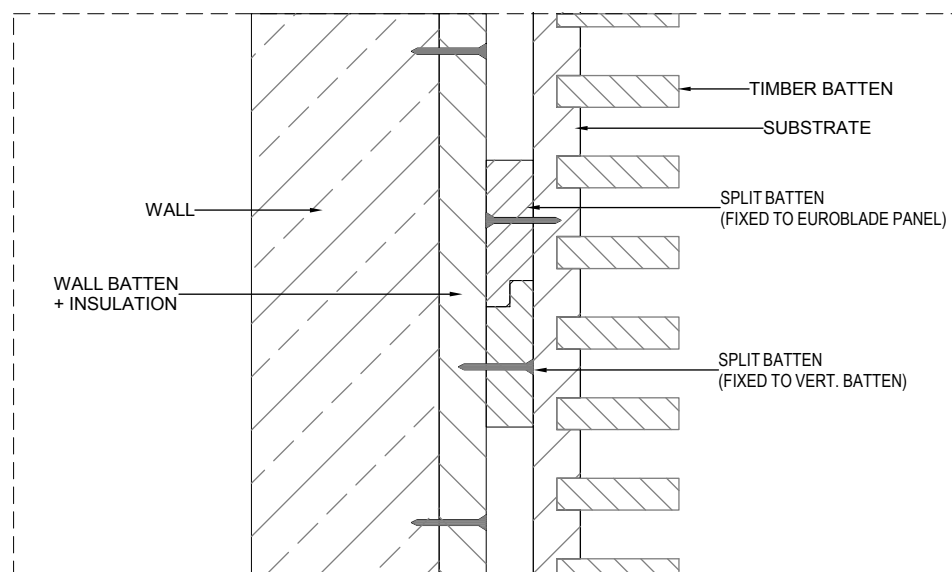
EUROBLADE TO WALLS HORIZONTAL BATTEN DIRECTION

Split batten fixing

Panels with small split batten blocks fixed to matt-black substrates are installed to split battens fixed to vertical wall battens.



Plan section showing split batten fixing



COMPLETE YOUR DESIGN WITH **EUROPANEL**
HELPLINE 02 8284 6410 WWW.EUROPANEL.COM.AU

**europanel**
acoustic solutions