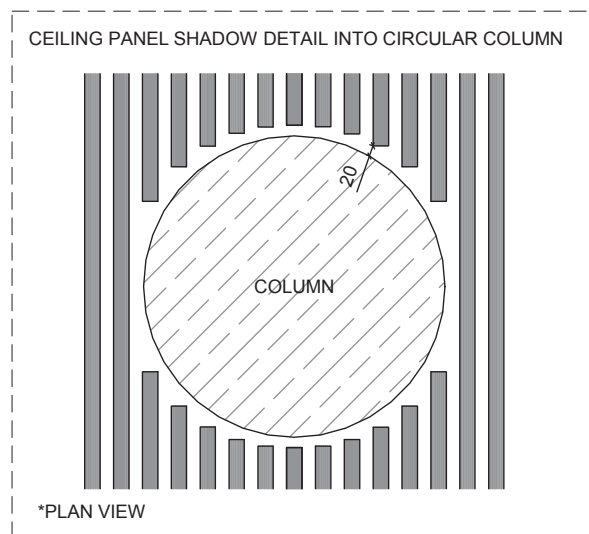
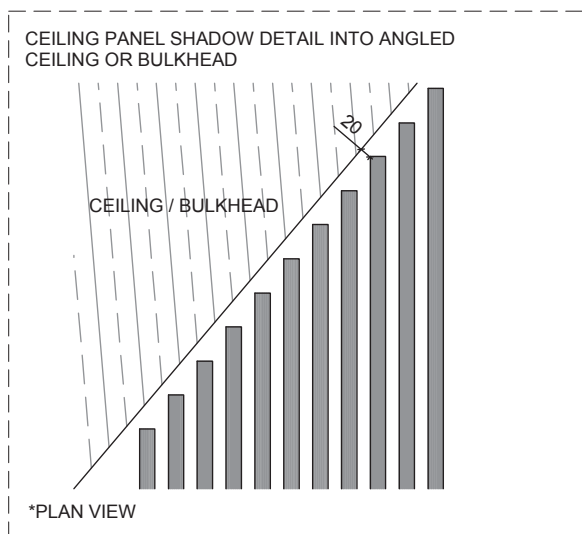
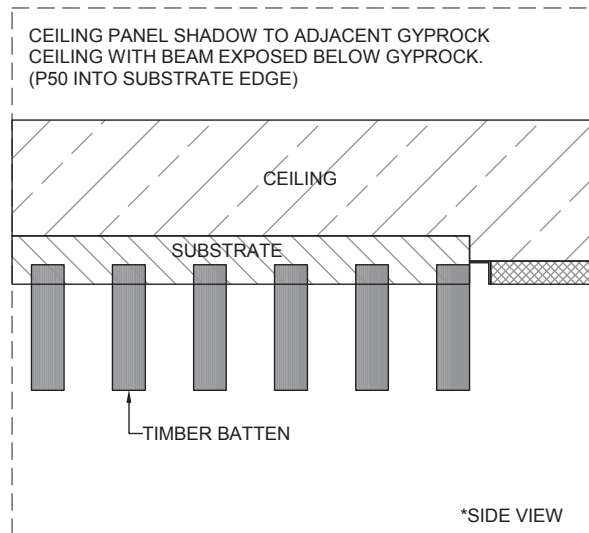
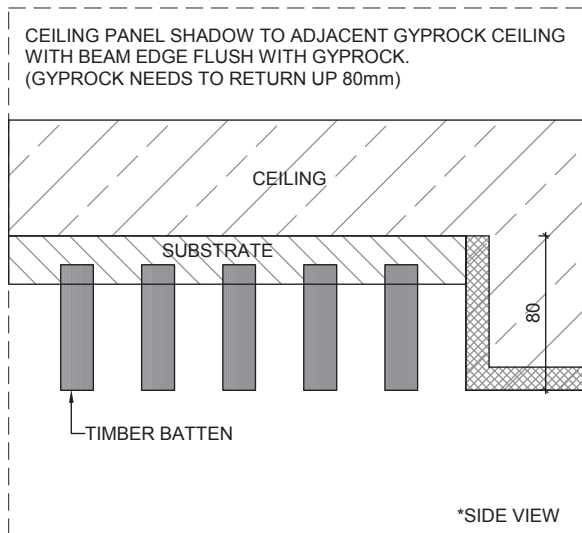
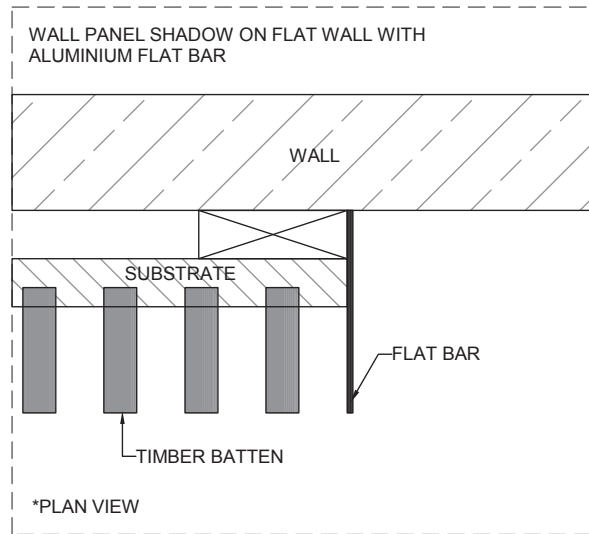
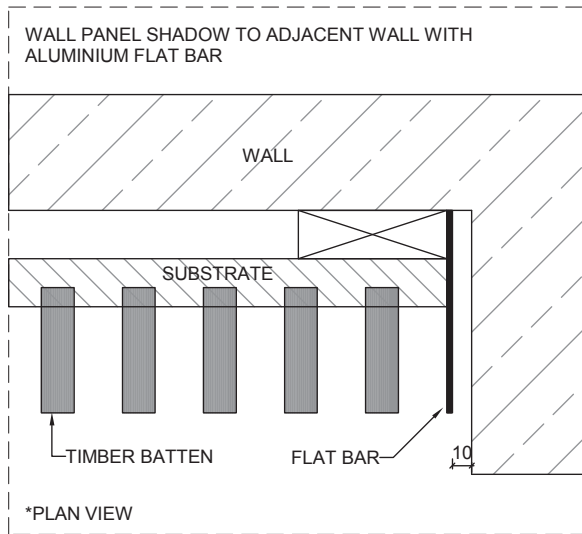


wall & ceiling panel shadows

EUROBLADE



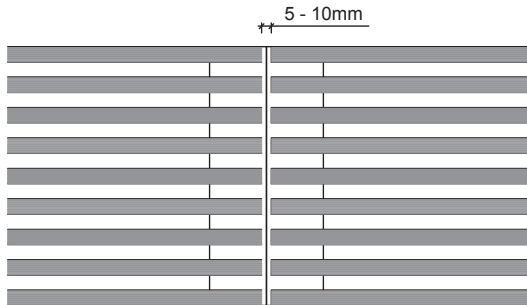
COMPLETE YOUR DESIGN WITH **EUROPANEL**
 HELPLINE 02 8284 6410 WWW.EUROPANEL.COM.AU



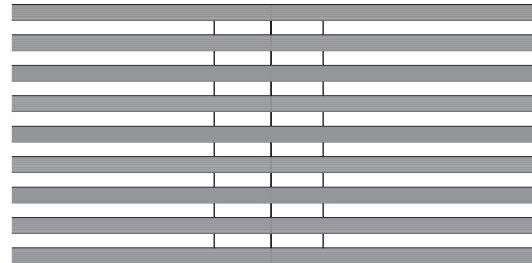
wall & ceiling joints

EUROBLADE

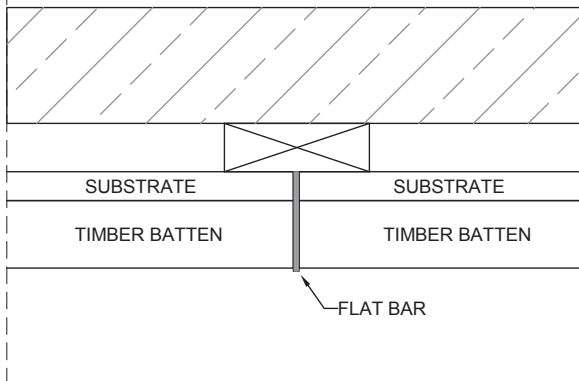
WALL AND CEILING PANEL EXPRESSED 5-10mm
SHADOW JOIN TO BATTENS (RECOMMENDED)



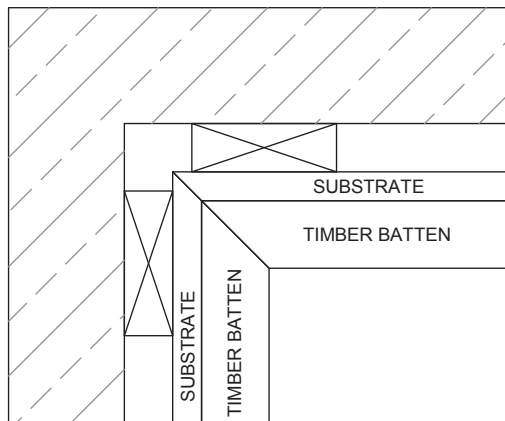
WALL AND CEILING PANEL HARD BUTT JOINT



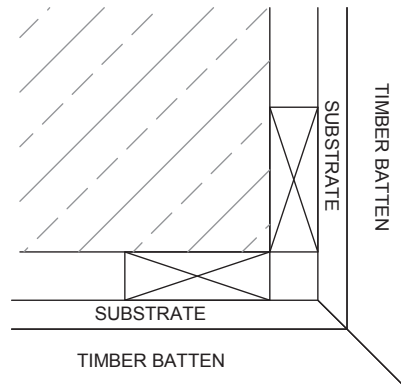
WALL PANEL HARD BUTT JOINT WITH ALUMINIUM
FLAT BAR BETWEEN PANELS (HORIZONTAL BATTENS ONLY)



WALL AND CEILING PANEL WITH HARD MITRED
INTERNAL JOINT (HORIZONTAL BATTENS ONLY)

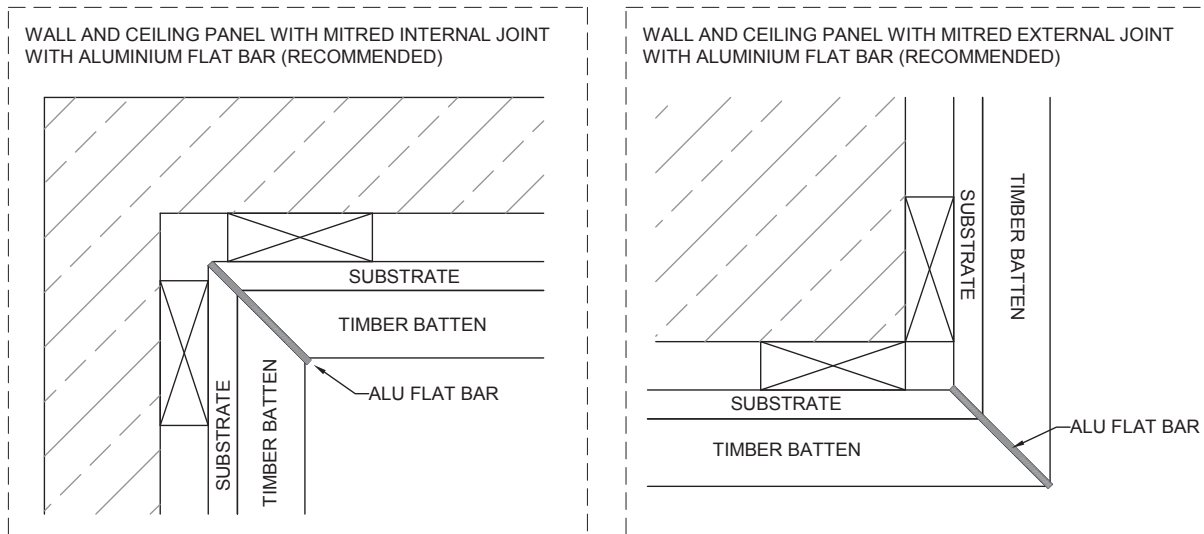


WALL AND CEILING PANEL WITH HARD MITRED
EXTERNAL JOINT (HORIZONTAL BATTENS ONLY)

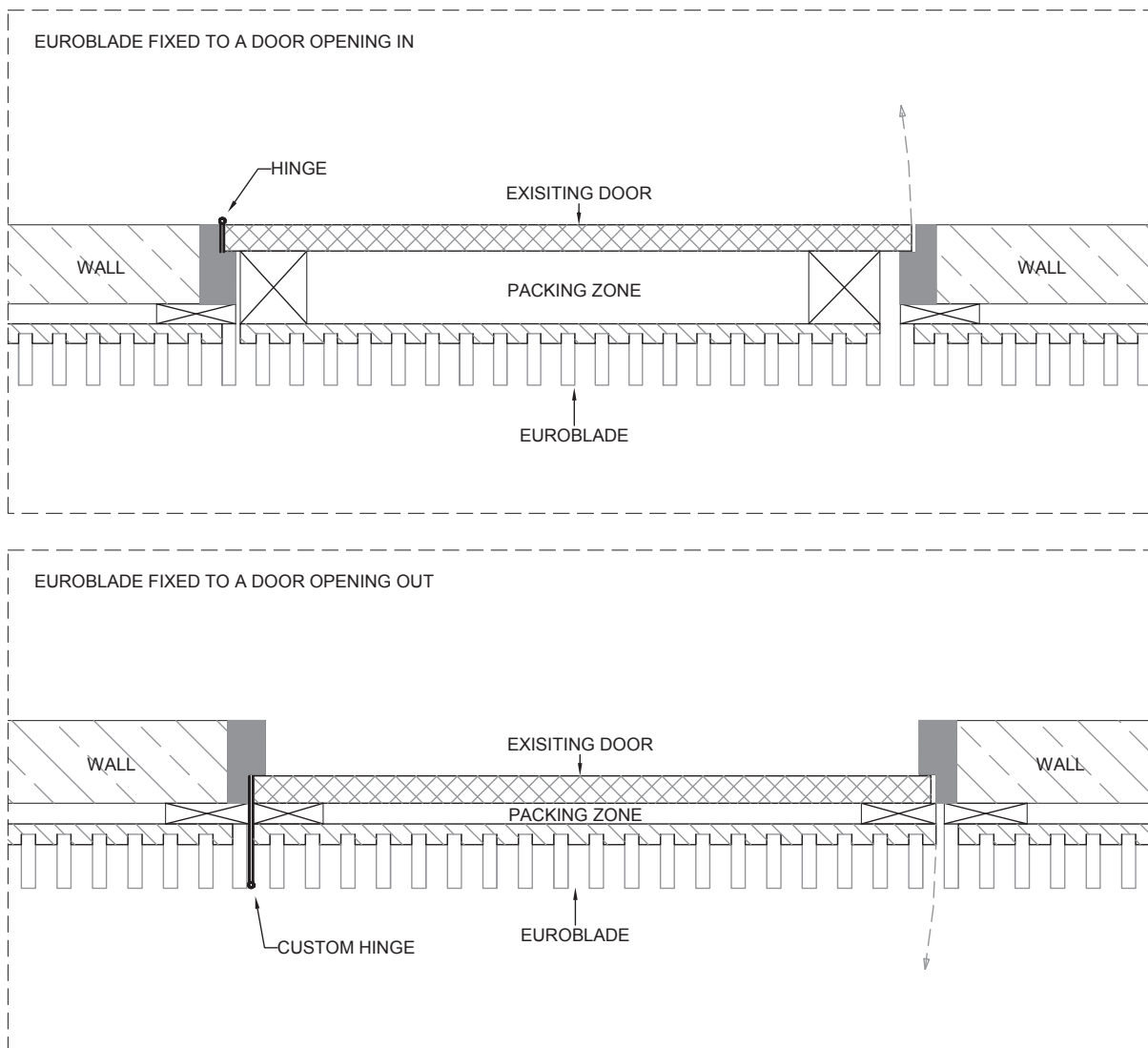


wall & ceiling joints (CONTINUED)

EUROBLADE



EUROBLADE ON EXISTING DOORS



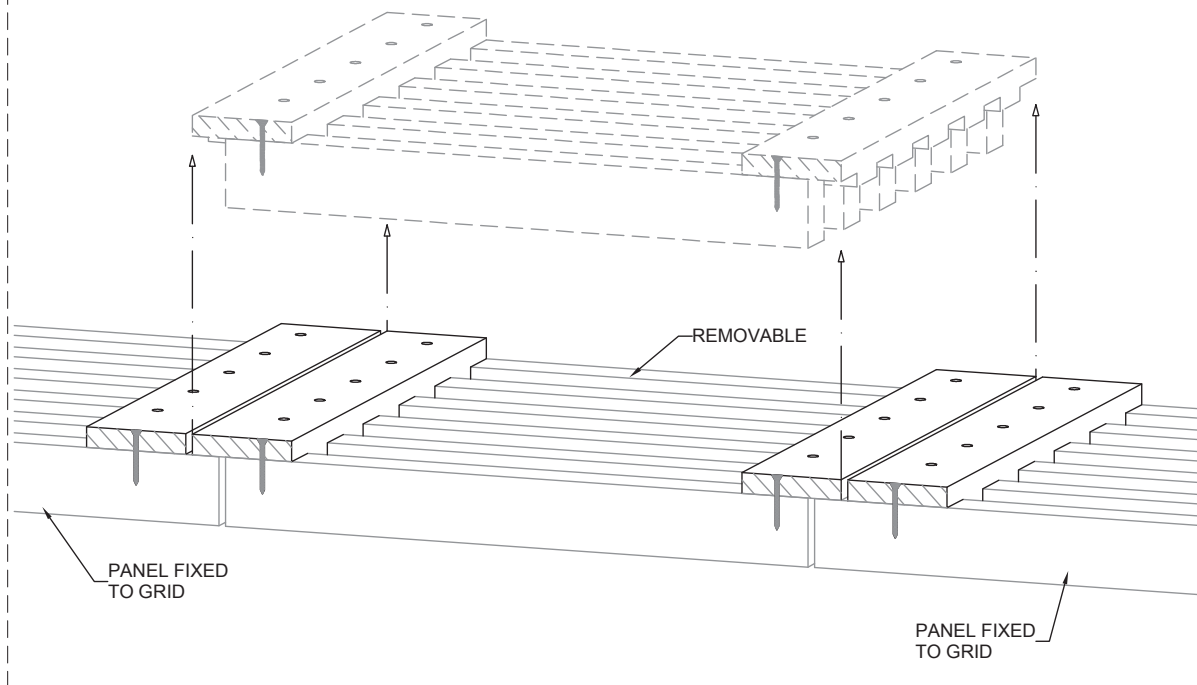
COMPLETE YOUR DESIGN WITH **EUROPANEL**
HELPLINE 02 8284 6410 WWW.EUROPANEL.COM.AU



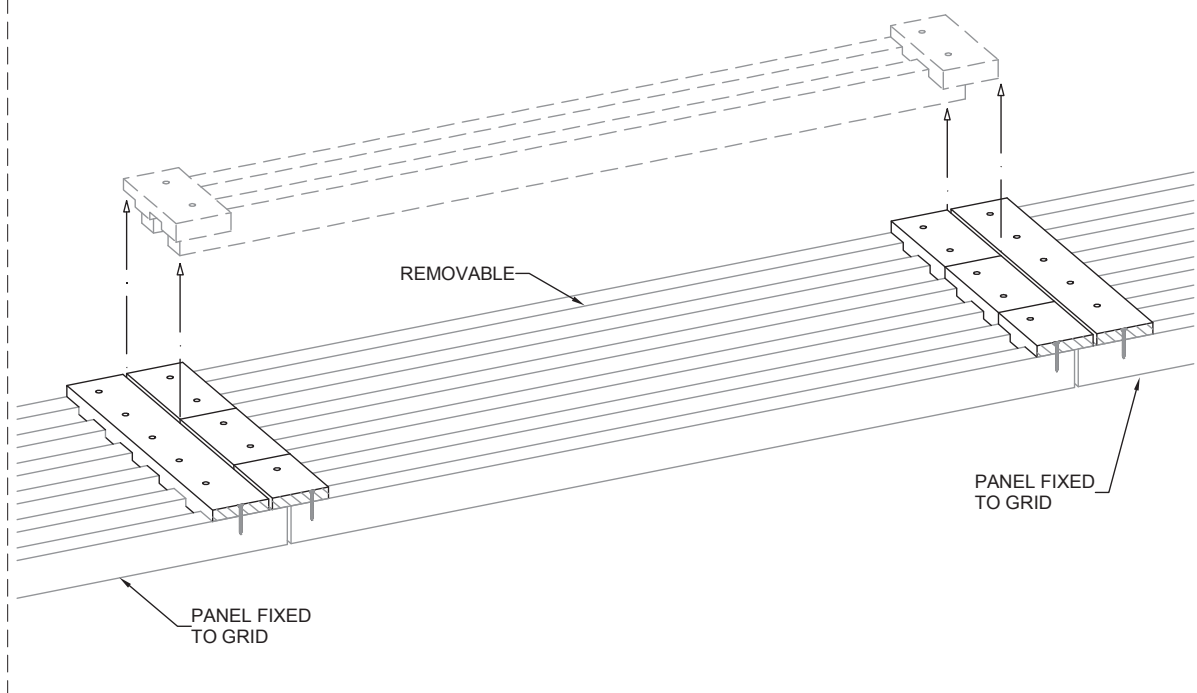
access panels

EUROBLADE CEILINGS

TYPICAL MANHOLE STYLE 600mm SQUARE PANEL WITH EXTENDED SUBSTRATES,
SUPPORTED BY EXTENDED BATTENS ON ADJACENT PANELS



SMALLER WIDTH BATTEN PANELS THAT ARE LONGER IN LENGTH, SO AS TO ELIMINATE OBVIOUS BREAK LINES IN BATTENS



COMPLETE YOUR DESIGN WITH **EUROPANEL**
HELPLINE 02 8284 6410 WWW.EUROPANEL.COM.AU

